



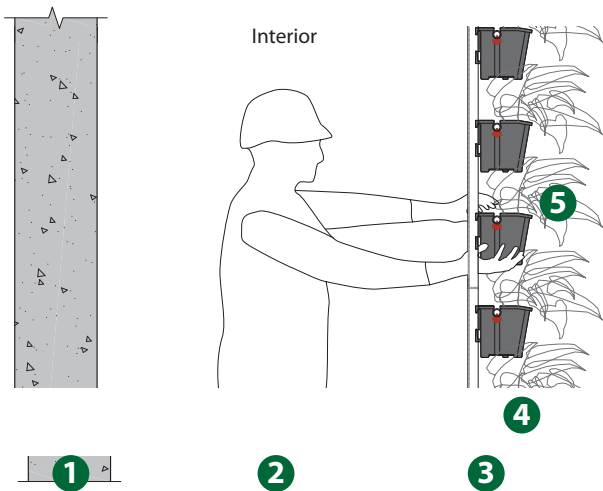
A lightweight green wall planter with rear access for easy maintenance. Its eight reservoir cells (~2.8 L/m<sup>2</sup>) reduce irrigation, while overflow outlets prevent flooding. Side notches fit irrigation lines, and a three-point hook allows easy removal.

### APPLICATIONS:

- Indoor and outdoor green walls
- Pre-grown or modular installations
- Facade greening

### BENEFITS:

- Lightweight and durable
- Rear access for easy maintenance
- Reservoir cells reduce irrigation
- Overflow prevents flooding
- Fits irrigation lines
- Supports pre-growing of plants



- (1) Exterior Wall
- (2) Maintenance Ledge Area
- (3) Green Wall Subframe
- (4) PlanterCell® 120
- (5) Selected Green Wall Plants

Tech Specs	UOM	PlanterCell® 120	
SEC Green Label		Yes	
SGBC Green Product		✓✓✓✓	
Material		100% Recycled PP	
Colour		Black	
Size:	Height	mm	120
	Width	mm	138
	Length	mm	250
Pieces per m <sup>2</sup> Area	pc		18
Nominal Weight	Planted	kg/pc	~3
Cells (Reservoirs)	nos.		2 x 4
Water Storage	Capacity	l/pc	0.34

(planting within tray)  
 SEC = Singapore Environment Council  
 SGBC = Singapore Green Building Council



Fire resistant version available. Please contact us for more information.