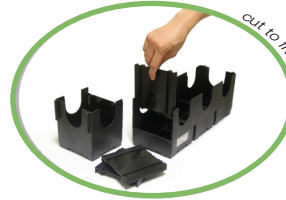
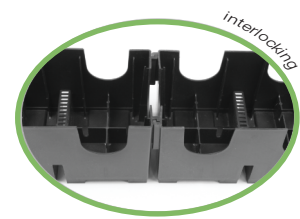
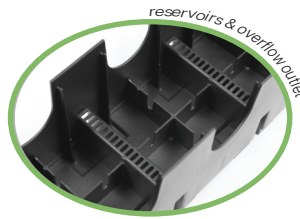
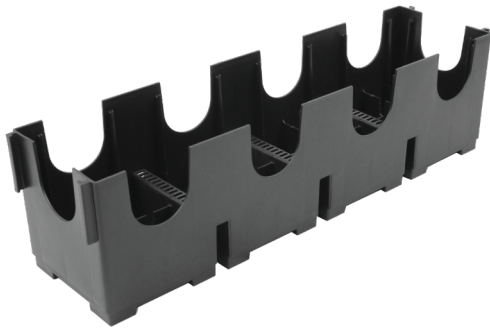


PlanterCell® 125



A lightweight, strong, stackable planter box for double-sided green walls. It has built-in water reservoirs (36.8 L/m²) and overflow outlets to prevent flooding. The boxes interlock, can be cut to fit any site, and use end plates when needed. Plants can be grown directly in the tray or in the cells, including pre-growing before installation.

APPLICATIONS:

- Double-sided green walls
- Vertical gardens for indoor or outdoor spaces
- Pre-grown plant panels for quick on-site installation
- Green screens for privacy or shading
- Landscape areas needing lightweight planter solutions

BENEFITS:

- Lightweight yet strong and stackable
- Built-in water storage (36.8 L/m²) reduces watering frequency
- Overflow outlets prevent flooding and excess weight
- Interlocking design creates stable walls
- Can be cut to fit site conditions; end plates available
- Supports versatile planting methods (tray or cell)



- (1) PlanterCell® 125
- (2) PlanterCell® Planting Mix
- (3) Selected Green Wall plants

Technical Specifications		UOM	PlanterCell® 125
SEC Green Label			Yes
SGBC Green Product			✓✓✓✓
Material			100% Recycled PP
Colour			Black
Size:	Height	mm	125
	Width	mm	125
	Length	mm	500
Pieces per m ² Area		pc	16
Nominal Weight:	Planted	kg/pc	5 to 7
Cells (Reservoirs)		nos.	4 x 4
Water Storage	Capacity	l/pc	~2.3

(planting within tray)
 SEC = Singapore Environment Council
 SGBC = Singapore Green Building Council



Fire resistant version available. Please contact us for more information.