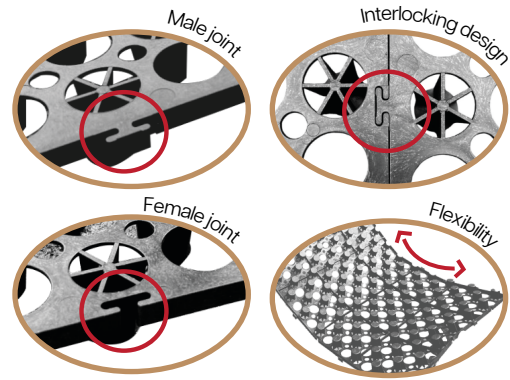


DB20 / 30 / 50 1000



DB20 / DB30 / DB50 boards are durable drainage boards designed for use beneath planters and raised beds to ensure effective drainage and prevent waterlogging. Available in various heights for applications ranging from basement sub-drainage to standard planter systems, the one-sided drainage design reduces stagnant water while integrated foot discs enhance flow rate and compressive strength.

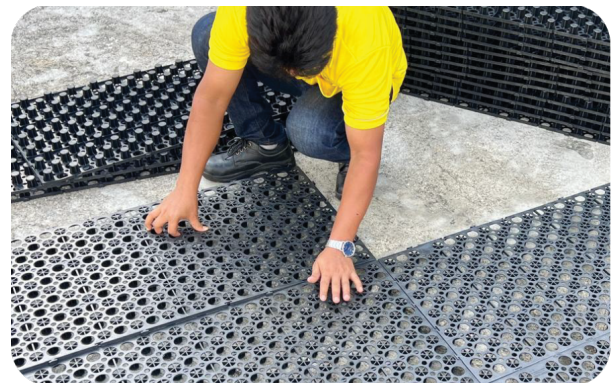
APPLICATIONS:

- Planters
- Raised beds
- Containers
- Basements
- Multi directional installation on top side

BENEFITS:

- Ensures proper drainage
- Prevents root rot and water damage
- Durable and chemical-resistant
- Prevent Water Pooling / Stagnant Water
- Flexible

Tech Specs			UOM	GrasCell [®] DB 20	GrasCell [®] DB 30	GrasCell [®] DB 50
SGBC Green Product				✓✓✓✓	✓✓✓✓	✓✓✓✓
Material				100% Recycled PP		
Colour				Black	Black	Black
Size	Height	mm		20	30	50
	Length	mm		1000	1000	1000
	Width	mm		500	500	500
No. of Panels per m2			pcs	2	2	2
Cells (numbers)			No.	13 x 27	13 x 27	13 x 27
Surface Void Area			No.	50.73%	50.73%	50.73%
Compressive Strength			tonnes	>90	>90	>80



Fire resistant version available. Please contact us for more information.