

PlanterCell® 130 is a modular green roof tray made from 100% recycled PP, storing up to 30.8 L/m² of water. Its planting media design allows easy tray handling and repositioning.

APPLICATIONS:

- Green roofs for homes, offices, and industrial buildings
- Sites with limited planting space
- Off-site pre-planting
- Roofs with light foot traffic
- Rainwater management

BENEFITS:

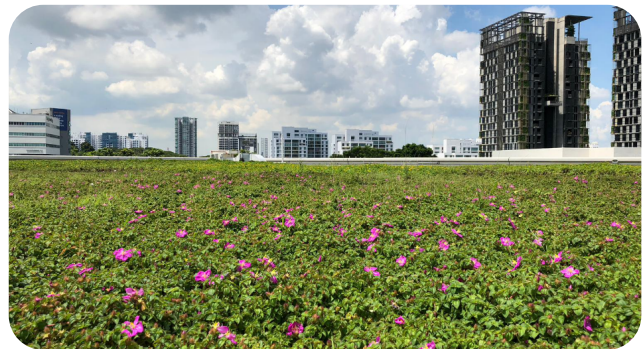
- Reduces irrigation with 30.8 L/m² water storage
- Even water distribution and good drainage
- Strong and durable for foot traffic
- Easy installation and layout changes
- Low maintenance with clog-prevention felt
- High water retention

Tech Specs		UOM	PlanterCell® 130
SEC Green Label			Yes
SGBC Green Product			✓✓✓✓
Material			100% Recycled PP
Colour			Black
Size:	Height	mm	130
	Inner Width	mm	500
	Inner Length	mm	500
	Outer Width	mm	515
	Outer Length	mm	515
Pieces per m ² Area		pc	4
Nominal Weight	Planted	kg/m ²	115 to 130
Cells (Reservoirs)		nos.	4 x 16
Water Storage	Capacity	l/m ²	30.80
Water Flow Rate @ 1% Gradient		l/m/s	>100
Compressive Strength		tonnes _r /m ²	97.3
Planting			Intensive Extensive Pre-planting

SEC = Singapore Environment Council
SGBC = Singapore Green Building Council



(1) PlanterCell® 130 (2) Geotextile Layer (3) Planting Media (4) Selected Green Roof plants



Fire resistant version available. Please contact us for more information.