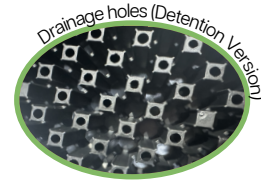
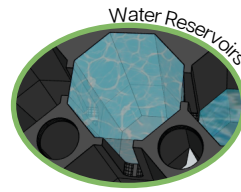
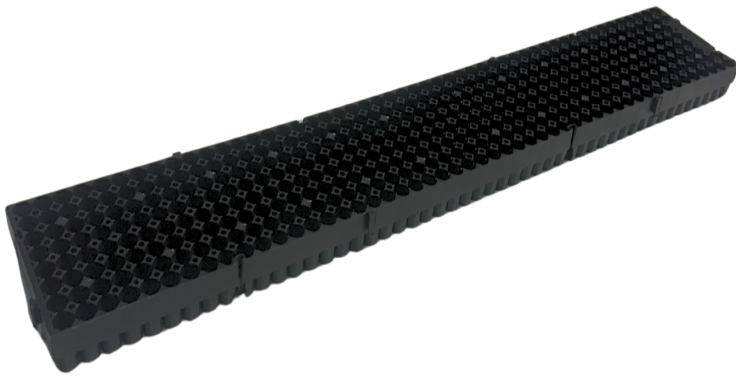


PlanterCell® 36



PlanterCell® 36 is a lightweight, durable green roof tray made from 100% recycled polypropylene. Designed for use on metal roofs, it features an interlocking system for fast, secure installation. The tray retains and manages water for both stormwater retention and detention, supports healthy plant growth, and is engineered to withstand regular foot traffic, making it ideal for accessible and high-performance green roof systems.

APPLICATIONS:

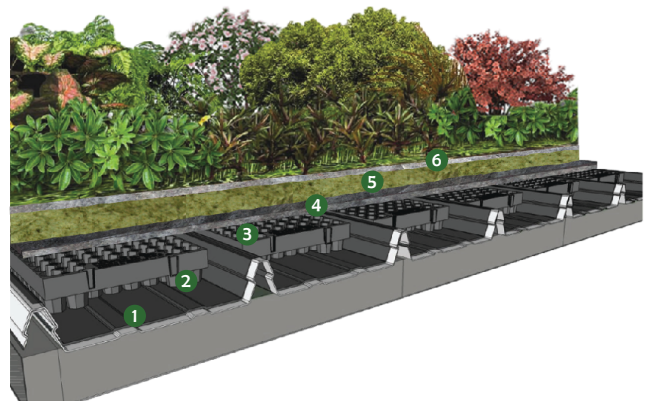
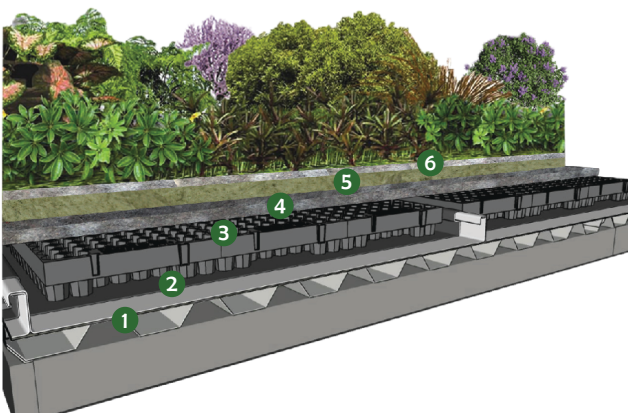
- Green roofs
- Rooftop planting systems
- Retention Use
- Detention Use

BENEFITS:

- Strong and lightweight
- Holds water for plants
- Easy to install



Tech Specs		UOM	PlanterCell® 36
SGBC Green Product			✓✓✓✓
Material			100% Recycled PP
Colour			Black
Size:	Height	mm	36
	Width	mm	160
	Length	mm	1000
Pieces per m ² Area		pc	6.25
Cells (Reservoirs)		nos.	396
Water Storage	Capacity	l/m ²	22.176
Water Flow Rate @ 1% Gradient		l/m/s	>36
Compressive Strength		tonnes _f /m ²	>100
Planting			Extensive



- (1) Metal Roof
- (2) 3 coats of Uniseal Root Shield root-proof coating
- (3) PlanterCell® 36 (Retention)
- (4) Hydroscopic Layer
- (5) Hydroscopic Layer
- (6) PlanterCell® with PlantMat

- (1) Metal Roof
- (2) Uniseal Root Shield (3 coats)
- (3) PlanterCell® 36 (Detention)
- (4) Hydroscopic Layer
- (5) Hydroscopic Layer
- (6) PlanterCell® PlantMat with selected green roof plants

Fire resistant version available. Please contact us for more information.



Tel: +65 6755 0055
Fax: +65 6753 1398

Email: sales@unisealsg.com
Facebook: www.facebook.com/unisealsg

Edition: 12.1.1. Jan 2026. All Rights Reserved
Last Update: Jan 2026

Disclaimer: All information, specifications, data, illustrations presented in this document although correct at the time of publication are not legally binding. • Some information are based on third party sources we believe reliable and we do not assure its accuracies or completeness. • There may be changes subsequent to publication • Technical data may vary slightly due to source of raw material • Subject to the care and method of application, deviation in performance may occur